

## DRH Series Broadband Horn Antennas

### Applications:

- Radiated Emissions
- Radiated Immunity
- Pre-Scan/Full Compliance

### Features

**FREQUENCY:** DRH-118: 1–18 GHz  
DRH1840: 18–40 GHz

**IMPEDANCE:** 50 ohms nominal

**VSWR:** < 1.5:1 average

**CONNECTOR:** DRH-118: Type N female  
DRH-1840: Type K female

**POLARIZATION:** Linear

**MAX. POWER:** DRH-118: 300 watts  
DRH-1840: 50 watts

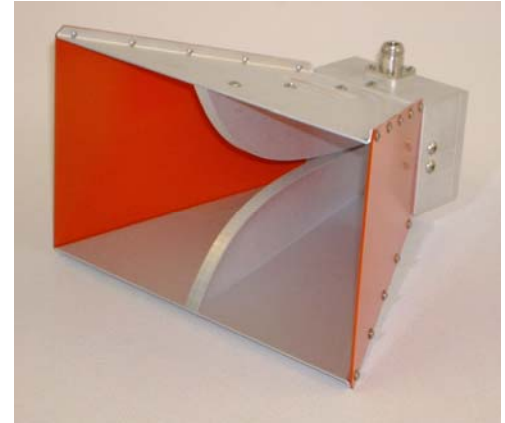
**SIZE (LxWxH):** DRH-118: 9 x 9.5 x 6 in, 23 x 24 x 15 cm  
DRH-1840: 5 x 5 x 3 in, 13 x 13 x 8 cm

**WEIGHT:** DRH-118: 4 lbs., 1.8 kg  
DRH-1840: 1 lb., .45 kg

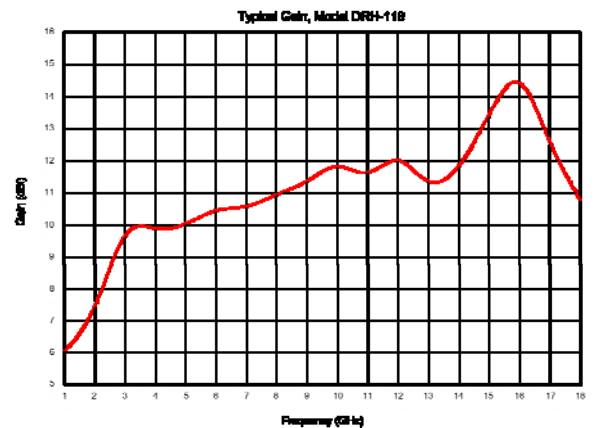
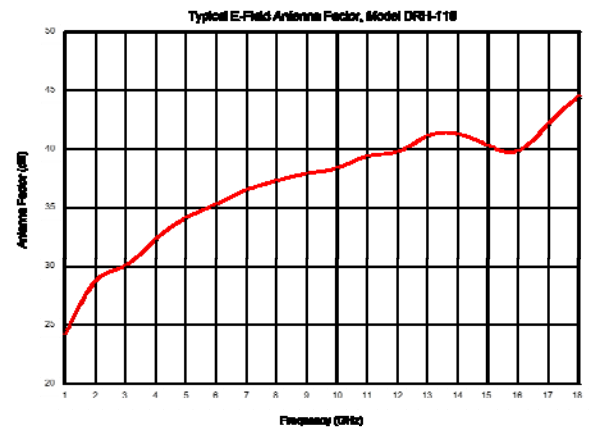
**MOUNT:** ¼-20 tripod mount  
Includes individual calibration.

### OPTIONS:

- SNAP! mount
- Tripod
- Carrying case



DRH118 shown



SunAR RF Motion  
6780 Sierra Court, Suite R  
Dublin, CA 94568  
925-833-9936

www.SunARrfmotion.com

